

Urban Design Laboratory

City of Belfast, United Kingdom

Richard Sommer

Paul Cote



Outline of Presentation

- Source Data and Organization
- Application: An Urban Design Investigation
- Presentation / Visualization Alternatives
- Necessity of a Database Foundation
- Strategies for Developing the Model
- Analytic Applications of Urban Data

Belfast Model: Information Sources

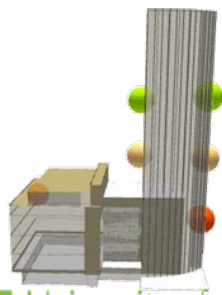


Planimetric Ground Cover (OSNI)
Planimetric Buildings (OSNI)
Aerial Photograph (Google Earth)

Building Heights (U.U. Sommer & Shaheen)
3d Buildings from Google 3d Warehouse

- Albert Clock: (Inshore Surveys.com)
- Obel Tower: (PeterRam)

Obel Tower View Studies



View of Tower:

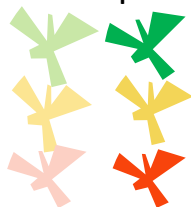
(Above)

51 Meters

34 Meters

17 Meters

Partial | Full



When finished, the Obel Tower will be 80 meters tall. How well will it perform as a landmark on the Belfast Skyline?

Building models shared on Google3d Warehouse:

Albert Clock by Inshore Surveys.com; Obel Tower by PeterRam

3/24/2009

4

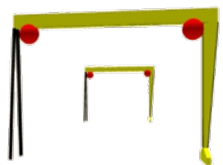
Paul Cote



View Corridors



Crane Points



Number visible:



Belfast's has invested in preserving the shipyard cranes Sampson and Goliath. Will tall development projects threaten important landmark views? Consider transfers of development rights.

They Move!

flickr®

[Home](#) [The Tour](#) [Sign Up](#) [Explore](#) ▾

You aren't signed in [Sign In](#) [Help](#)

[Search](#) ▾

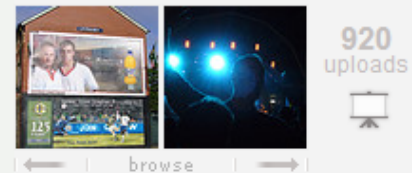
Two Cranes over Templemore



While looking down Templemore Avenue, I noticed that the Samson crane had moved up close and personal with Goliath (nearer town). I was only able to get one quick shot while the traffic lights were red, and Samson has now returned to the seaward side of the dock.

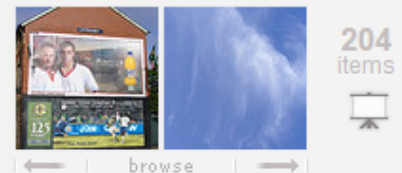
Uploaded on July 6, 2006
by [NickyBe](#)

NickyBe's photostream



This photo also belongs to:

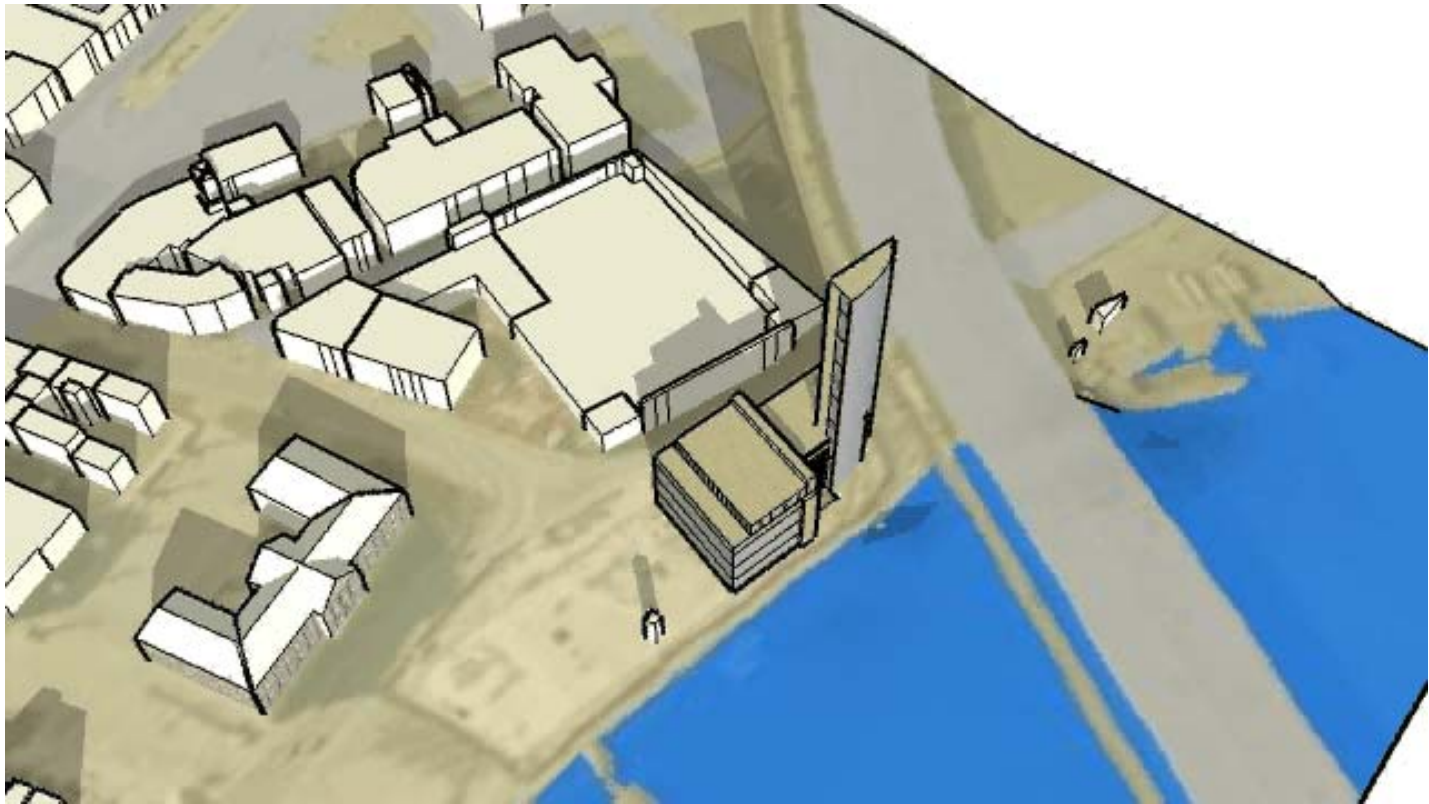
Images of Belfast (Set)



Samson & Goliath - Icons of Belfast (Set)



Shadow Studies



Obel Tower Shadows 9:00 AM to 5 PM March 25th
(Google Sketchup)

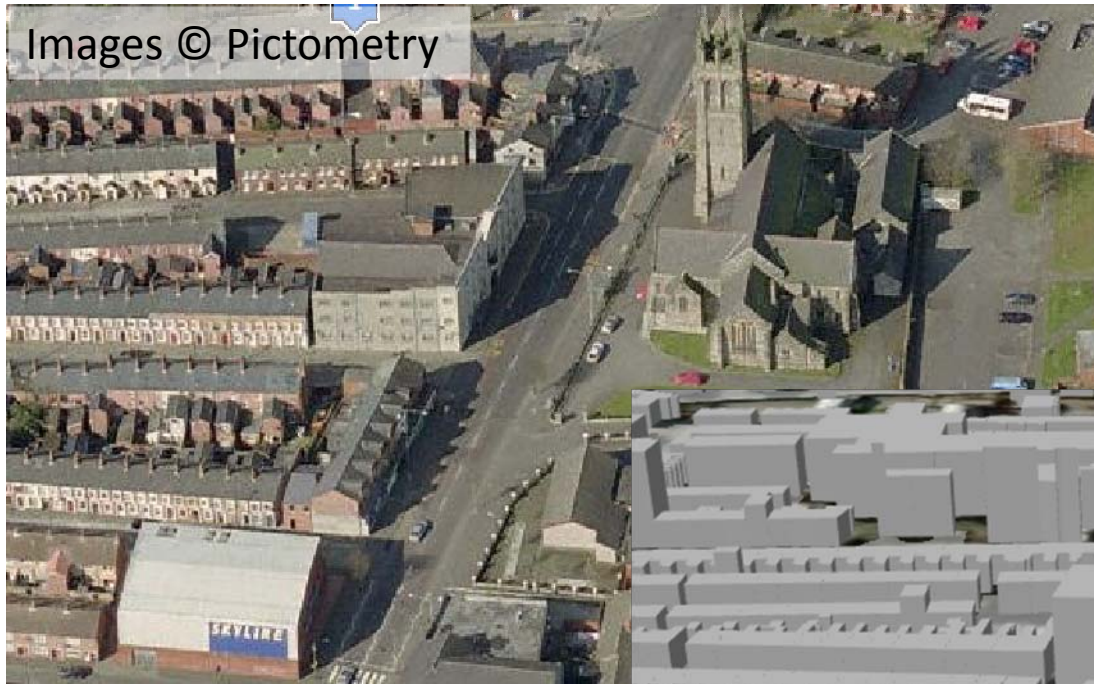
Community Sharing of 3d Model Assets

Standards for data exchange:

Collada, IFC, X3D



Simple Asset Development

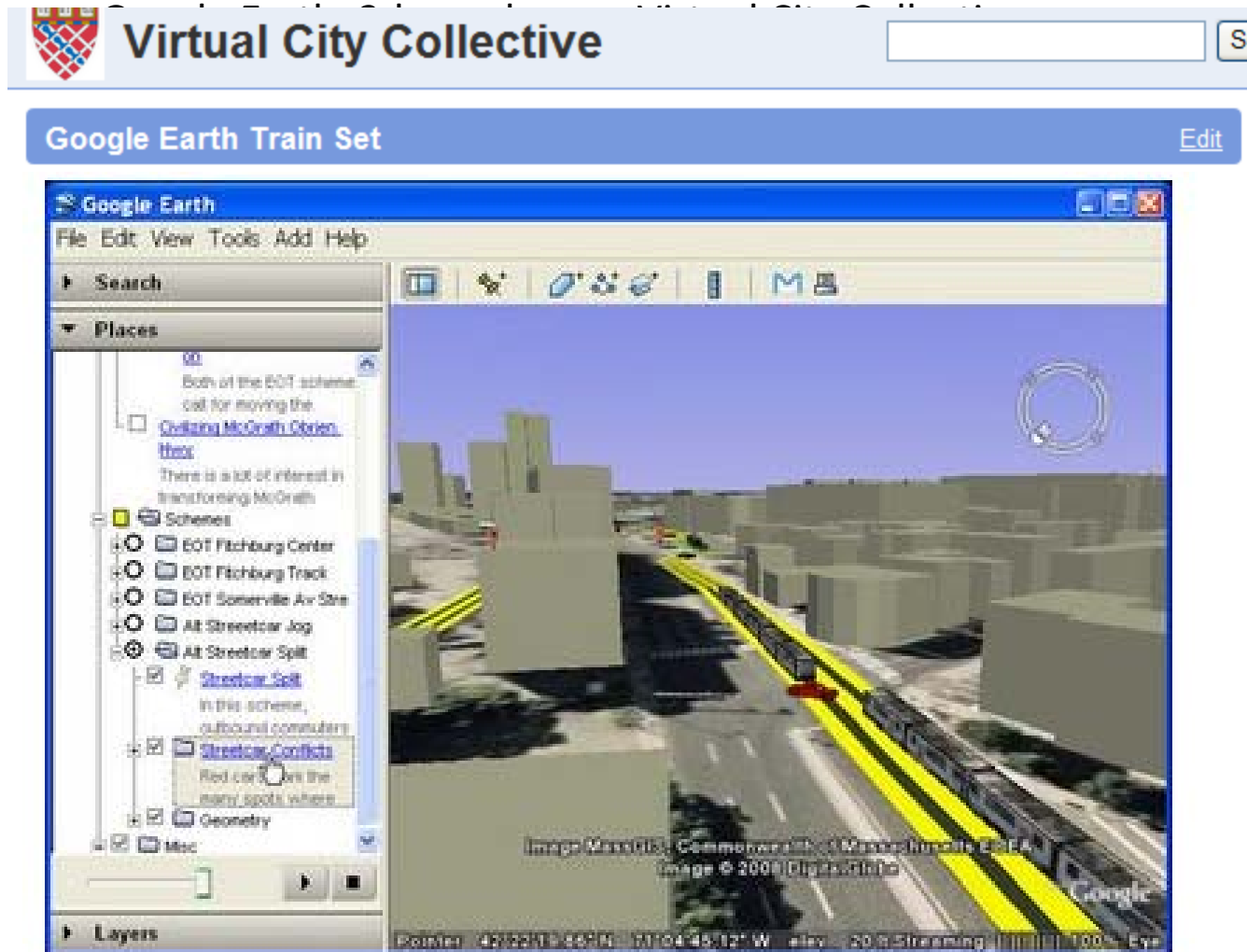


Models may be measured and articulated using oblique Photography.

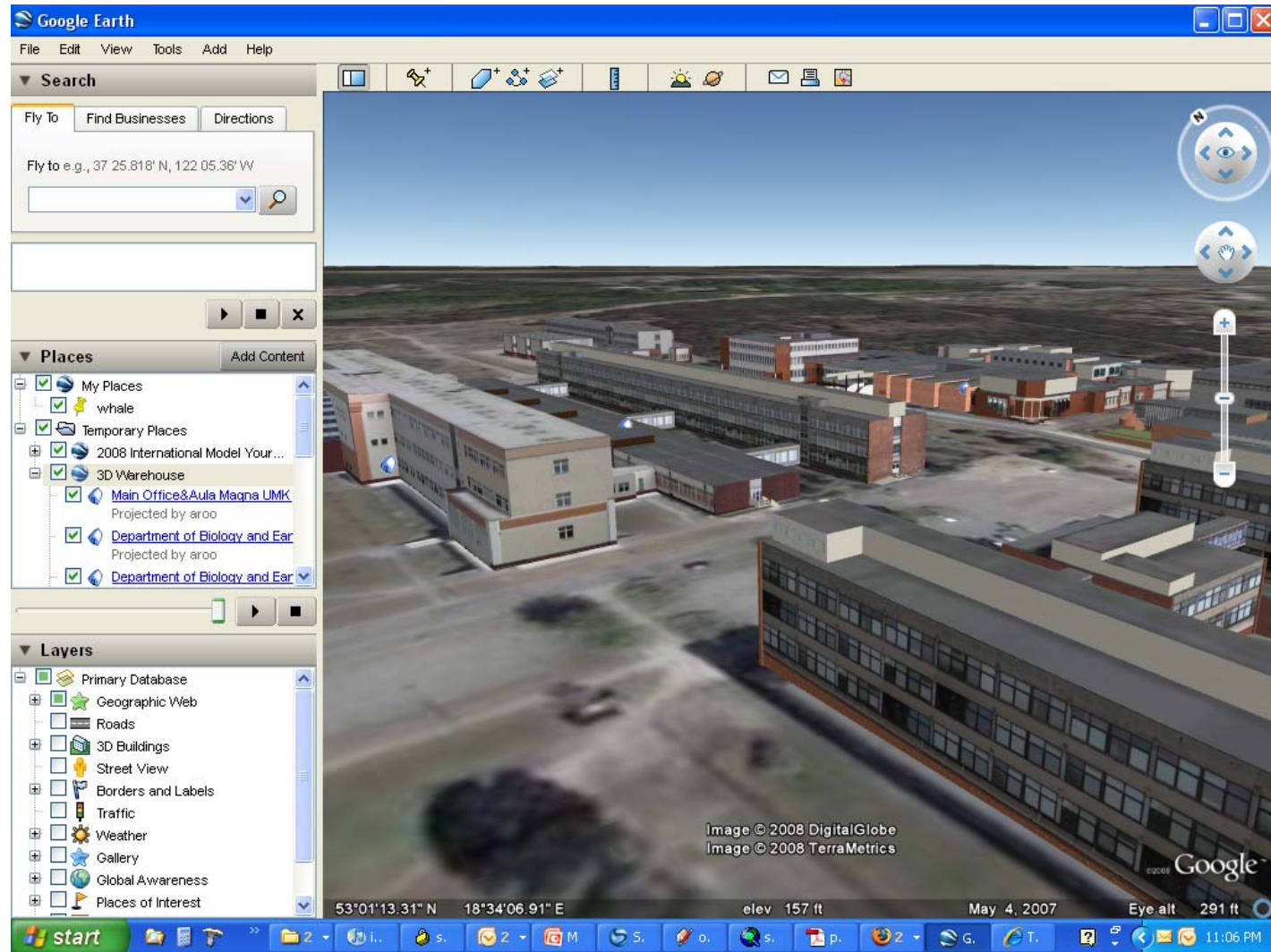
- Massing Model: 1 Minute
- Church model: 1 hour
- Barn Model: 10 min

Democratization of Urban Design Tools

- Community participation



Google Model Your Campus Initiative



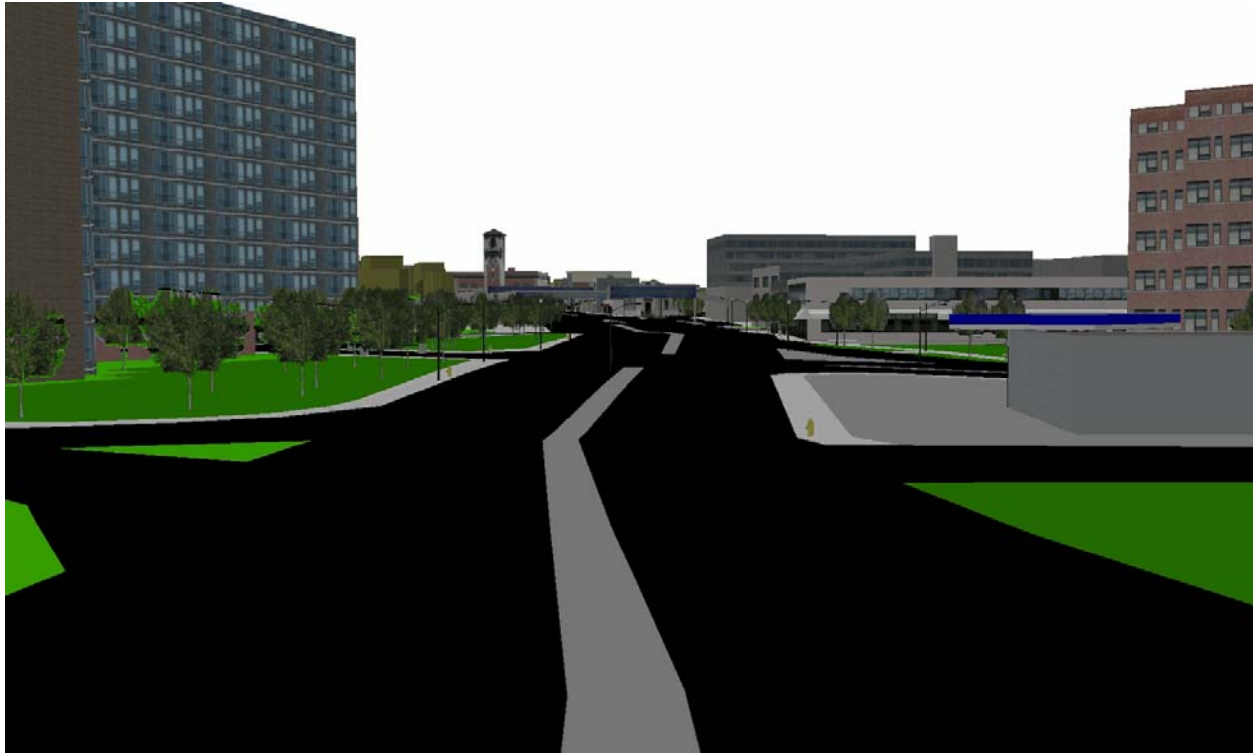
Nicholas Copernicus University,
Winning Entry: Google Model Your Campus Competition

3/24/2009

11

Paul Cote

Articulated Site Studies

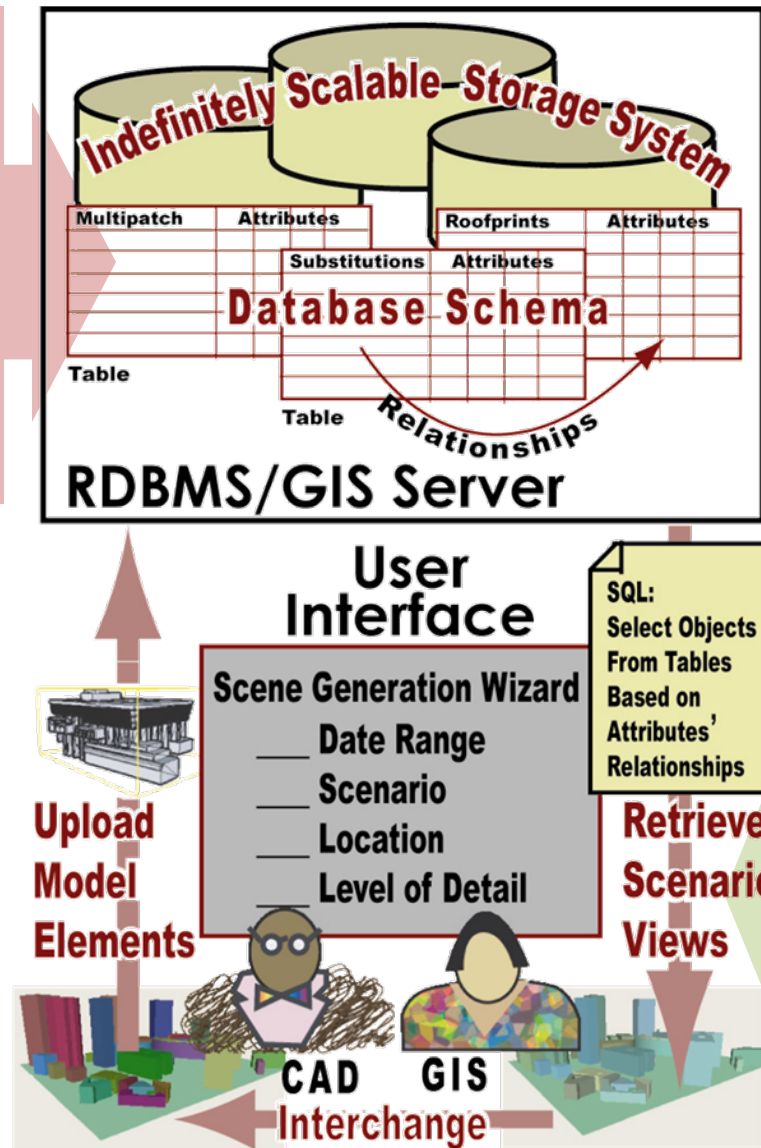


Better planimetric layers for ground cover, pavement, trees and street furniture may yield more evocative diagrammatic Portrayals. It would be possible to create more photorealistic Studies than this one using data from the GIS repository.

Database Asset Management System

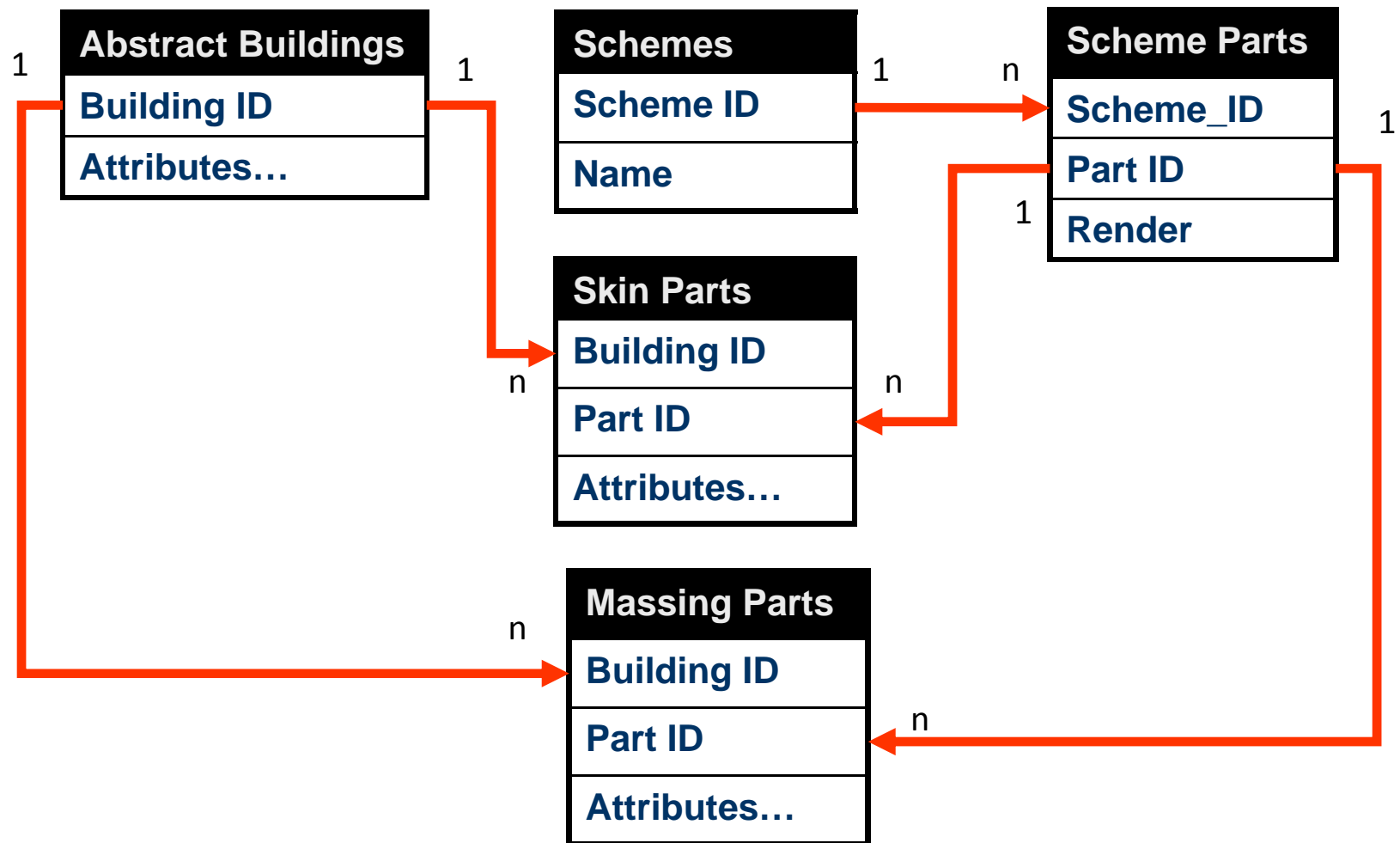
Very Large Collection Of Model Elements:

- Massing Model
- Detailed Building Models
- Historic Conditions
- Proposed Future Conditions



Versatility in Retrieving and Composing Scenes

Building Model Management Schema



3d Building Massing Parts Table

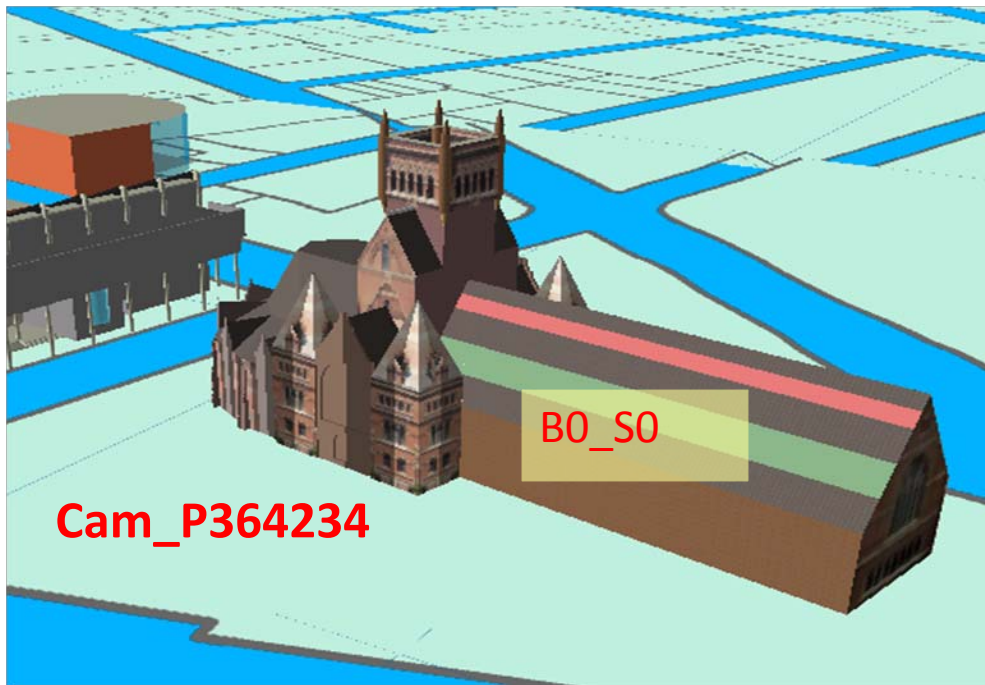
The Massing Parts Layer forms a complete model of every building in the metro area at a low level of detail (CityGML LOD2). Building parts may have more specific attributes from their parent Abstract Buildings.



Building Massing Parts	
Part_ID	Cam_P364234_B0_M1
Owner	Null
Built Date	1998
Demo Date	Null
Address	Null
Built	Yes
Stories	2

3d Building Skin Models

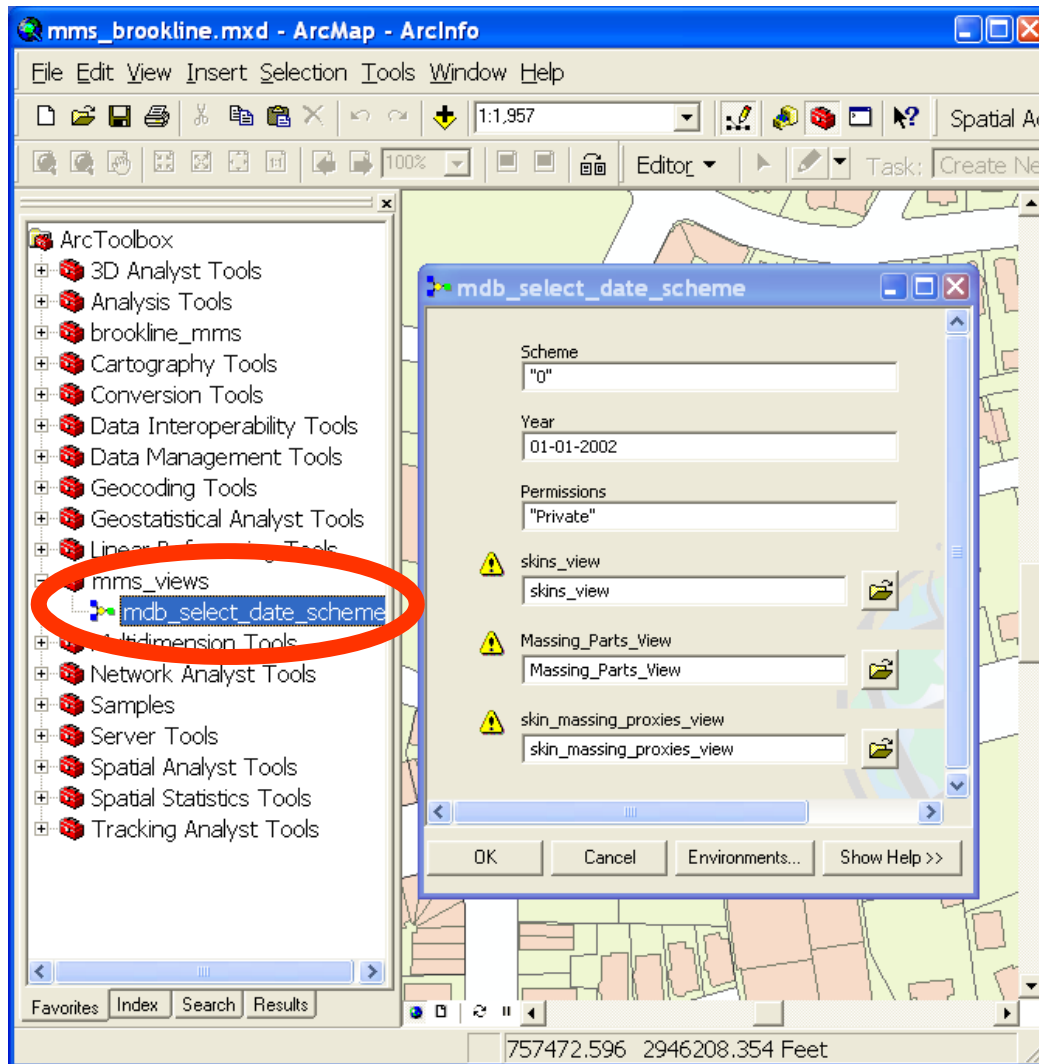
Using a 3D authoring tool, models of building exterior skins can be encapsulated as sketchup or collada models and placed into relational tables as georeferenced objects. Like Massing Parts, Skin Parts have unique IDs linking them to abstract buildings and may have more specific attributes.



Building Skin Parts

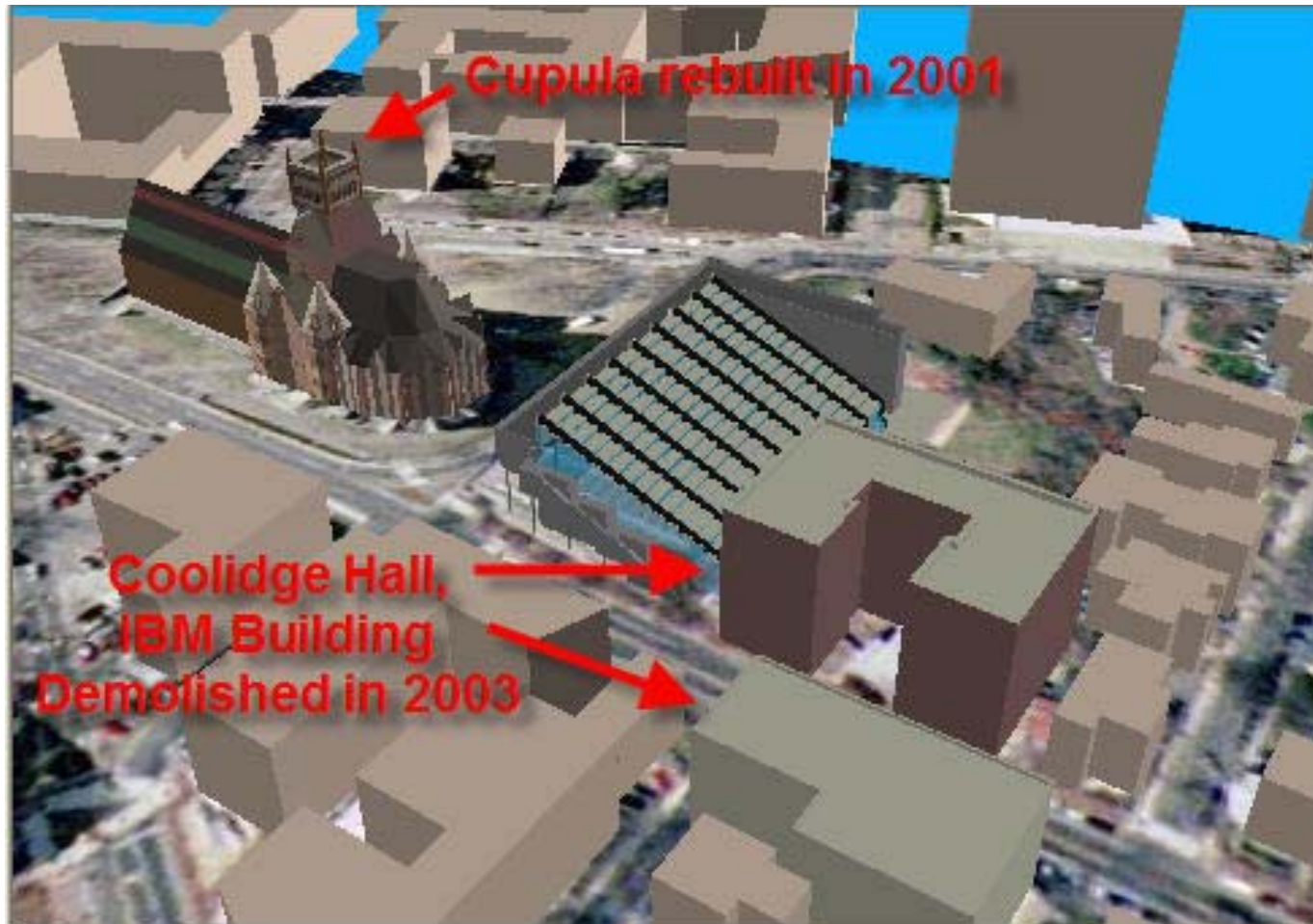
Shape	Multipatch
Model	Sketchup or Collada Blob
Part_ID	Cam_P364234_B0_S0
Owner	Null
Build Date	1870
Demo Date	Null
Built	Yes

The Scheme View Tool

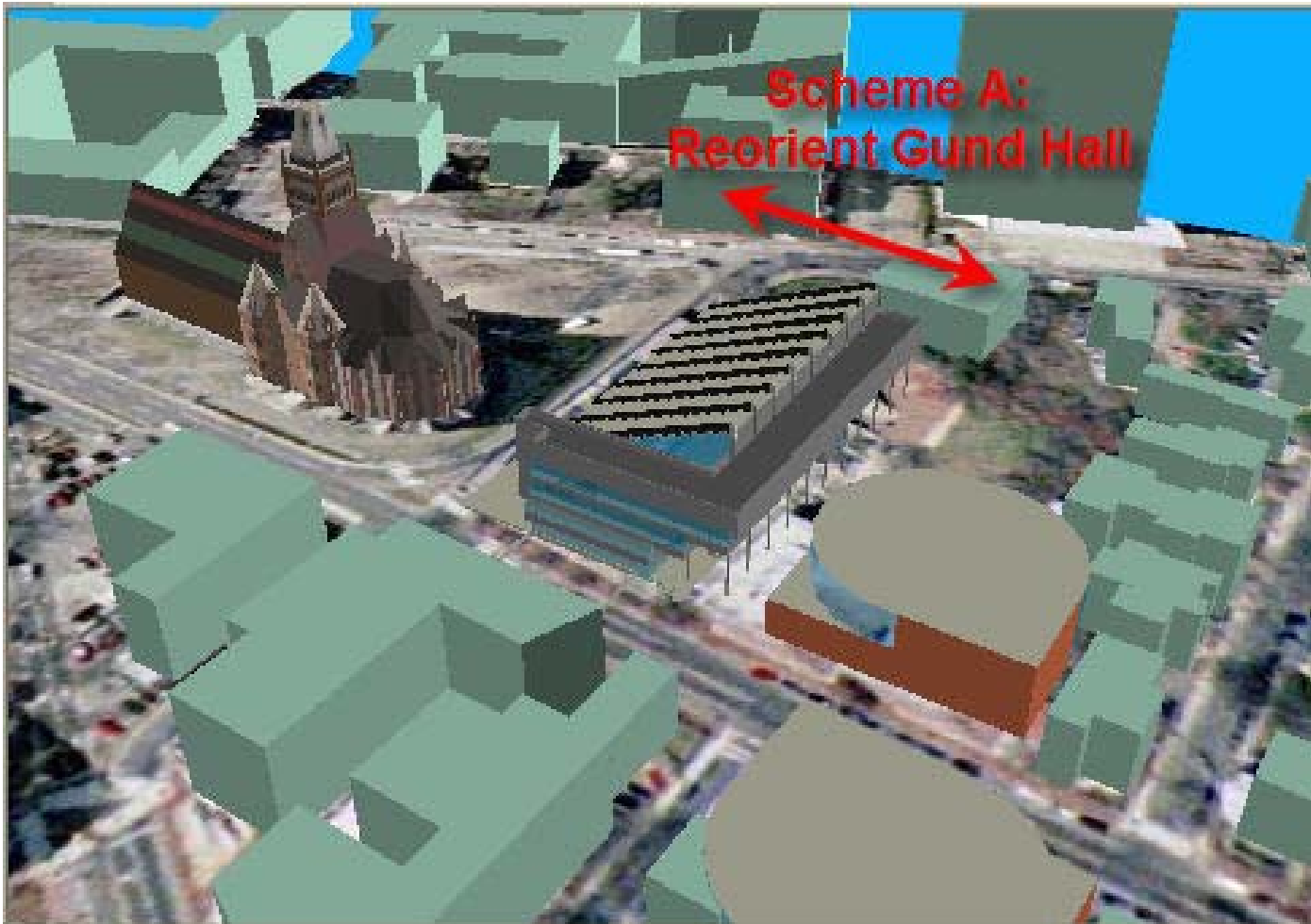


A tool has been created with all of the SQL to create the three views necessary to portray a Date and Scheme Specific Scenario based on the user's privileges. One needs only to double-click on the tool and fill in the blanks.

1998 Historic View



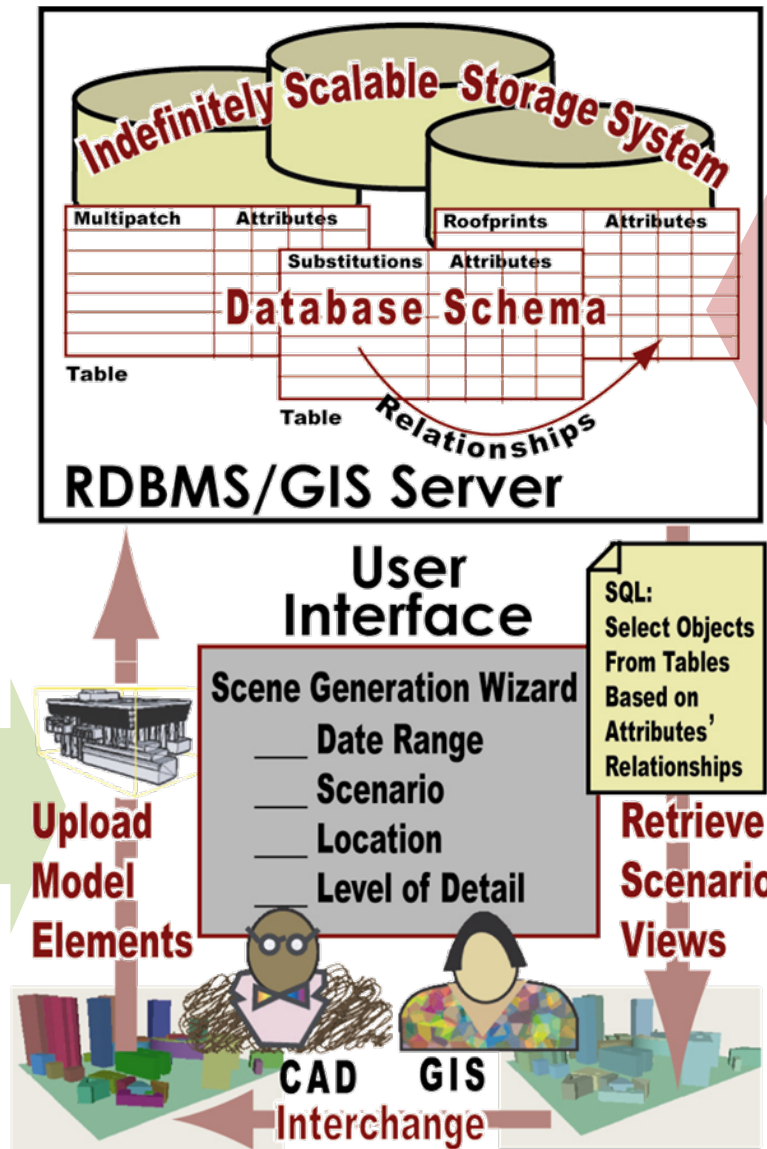
Unbuilt Scheme: Turn Gund Hall Around



View From Proposed Design Scheme



Technical Requirements



Authoring Tools:

- Standards Compliant
- Sketchup
- 3D Studio
- Other

Database

Management Tools:

- ArcGIS Desktop
- ArcGIS Server
- Open Source: Possible

Development Requirements:

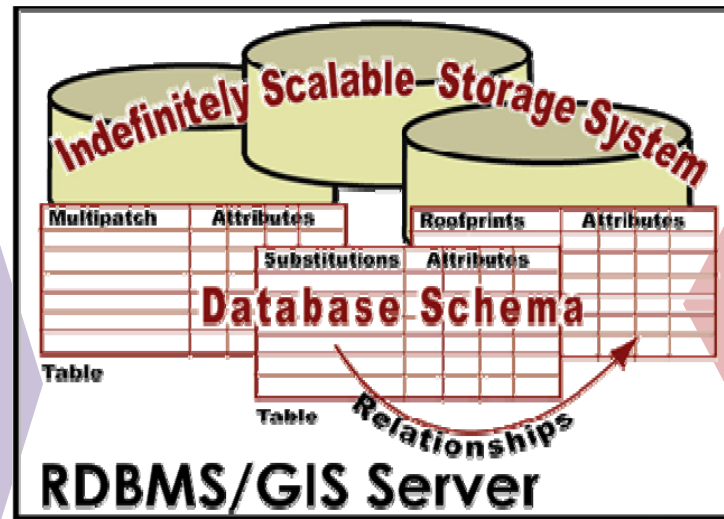


Database Design & Development:

- Conceptual Design
- Schema Design
- Data Prospecting
- Data Transformation
- Documentation

Training:

- Software Technique
- Asset Management Best Practices



User Interface

Scene Generation Wizard

— Date Range
— Scenario
— Location
— Level of Detail

SQL:
Select Objects
From Tables
Based on
Attributes'
Relationships

Upload
Model
Elements

Retrieve
Scenario
Views

CAD GIS
Interchange

Database Management Tools:

- ArcGIS Desktop
- ArcGIS Server
- Open Source: Possible

Computing Environment

- Servers
- Backups

GIS / CAD Specialist:

- Skilled / Tenacious
- Well Organized
- Successor - Oriented

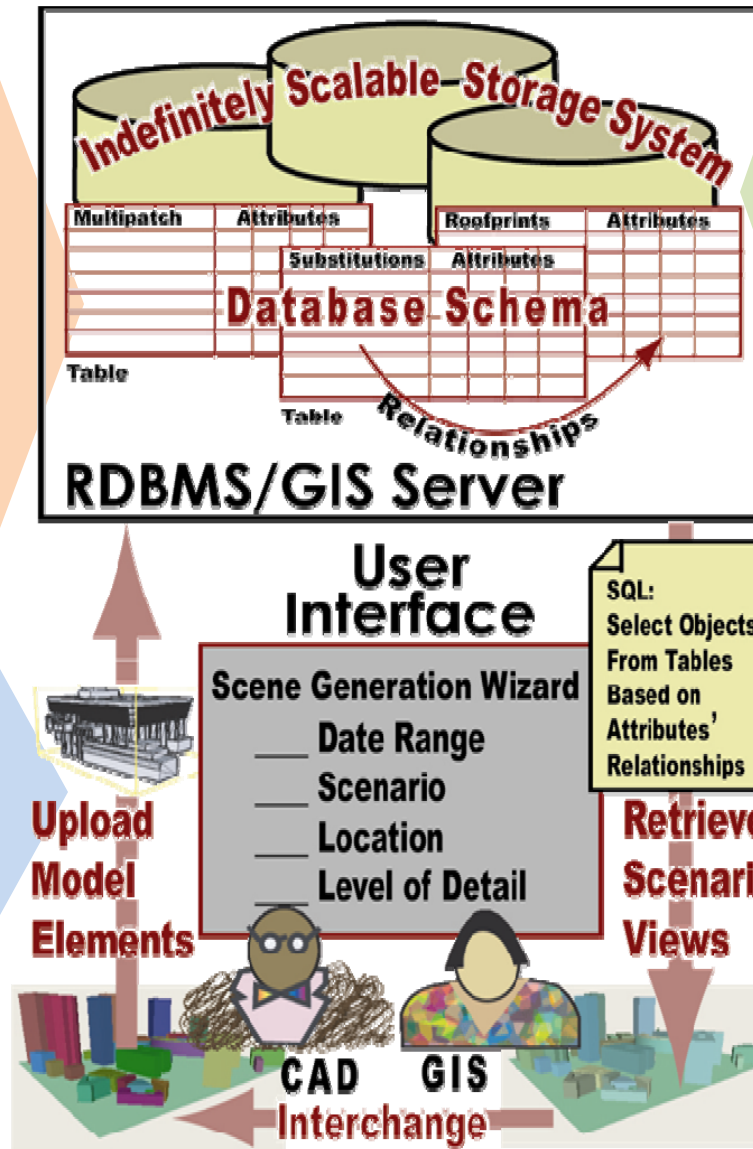
Model Asset Lifecycle

Government Collaborators:

- Aerial Photos
- Terrain Model
- Buildings (Heights?)
- Edge of Pavement
- Parks
- Water Bodies
- Trees
- Property Parcels

Model Contributors:

- Design Community
- Citizen Participants
- Students
- Model Managers



Documentation & Quality Control:

- Institutional Knowledge Repository

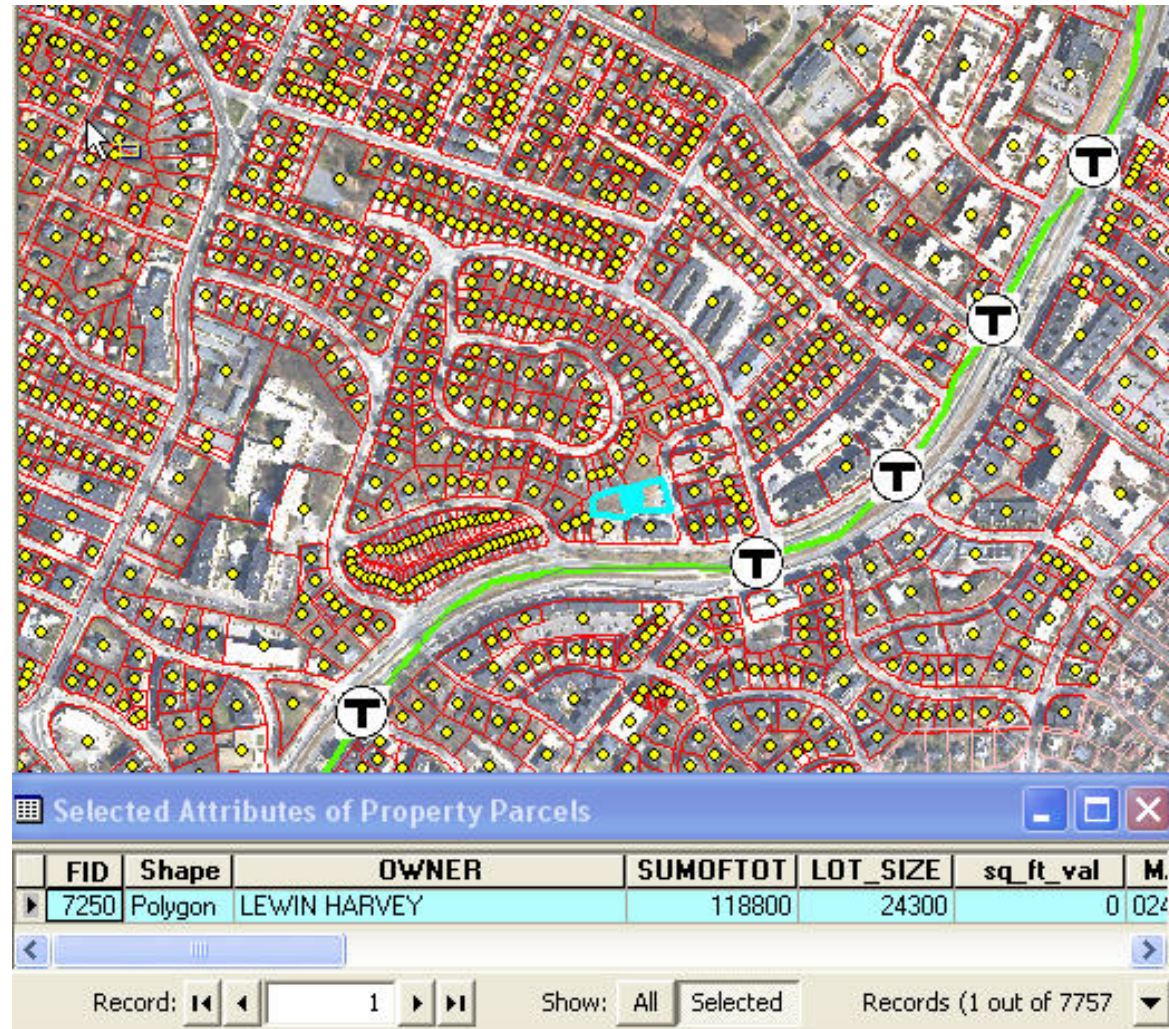
Web Viewer Tools

- Google Earth
- ArcExplorer

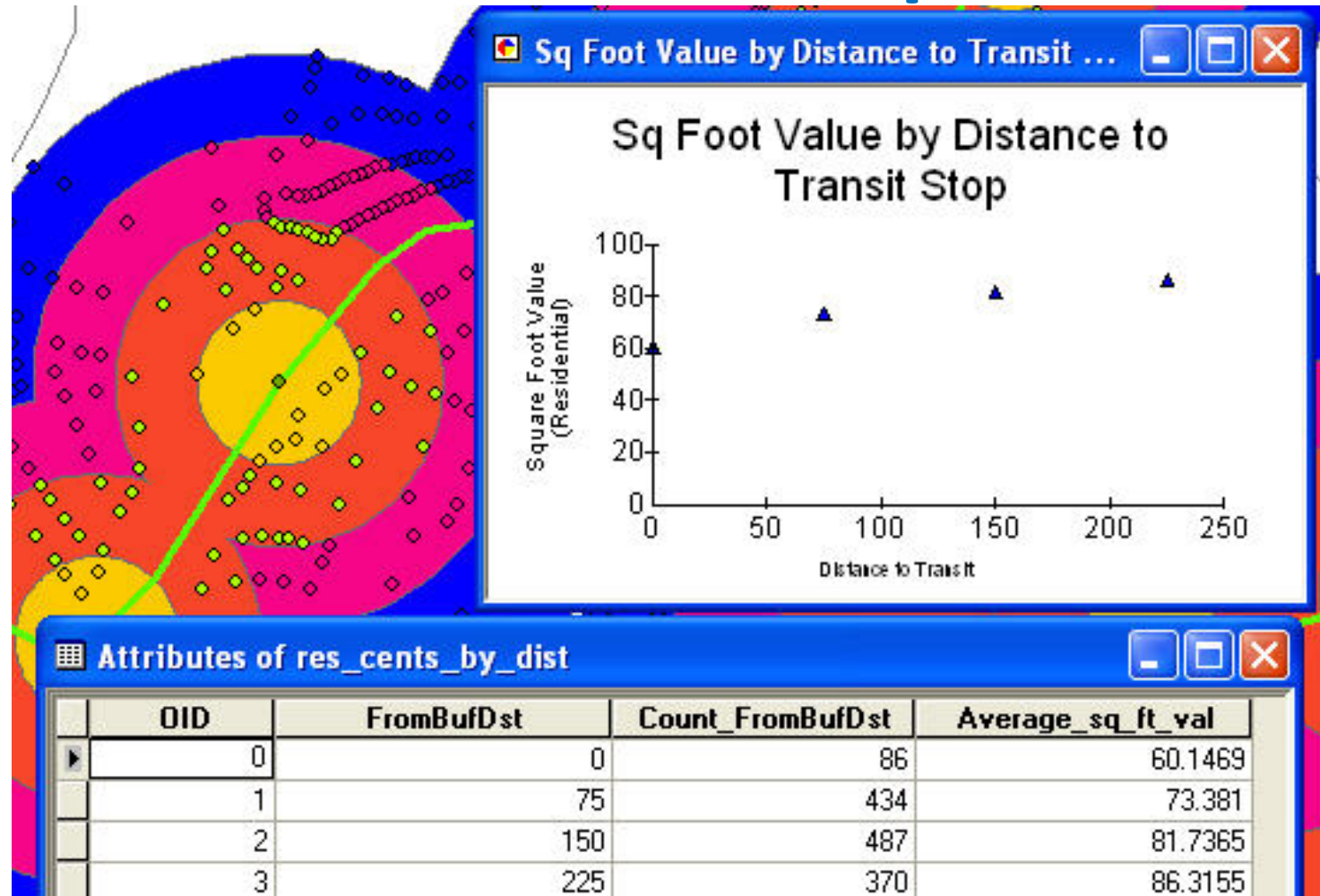
Composed Presentations:

- Acrobat
- Animation Files
- PowerPoint
- KML / Google-Earth

Analysis of Development Potential: Value of Transit Stop Access



Analysis of Development Potential: Value of Transit Stop Access



Analysis of Development Potential: Value of Transit Stop Access

Within 50
Meters



Analysis of Development Potential: Value of Transit Stop Access

Within 250
Meters

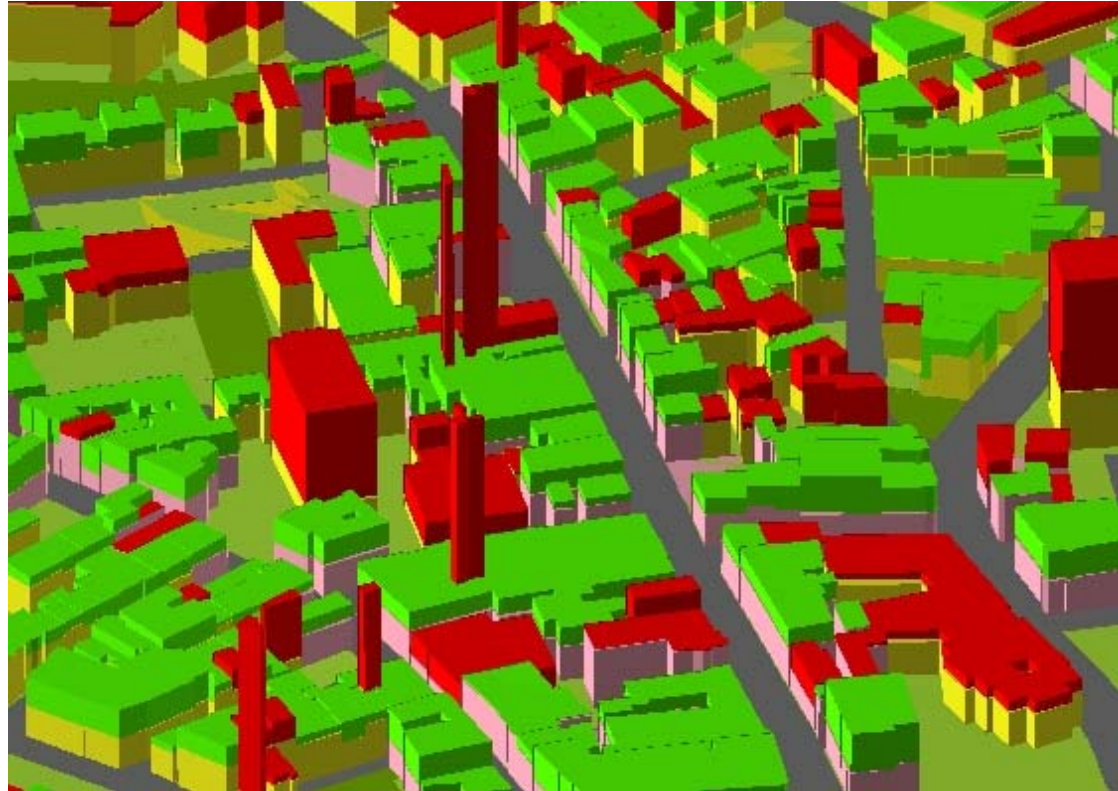
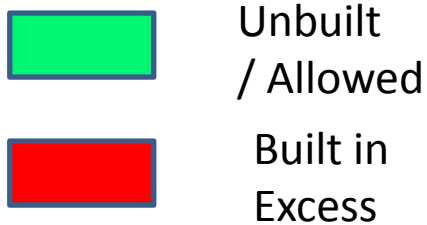


Analysis of Development Potential: Permitted vs Built Density

Land Use



Density Potential



References

- [Harvard GSD Metromodel Management System](#)
- [Public Infrastructure for Virtual Cities](#)
- [Virtual City Collective](#)
- [Town of Brookline Model Management System](#)
- [City Geography Markup Language](#)
- [Collada: 3D Asset Exchange Schema](#)
- [Integration of CAD, GIS, and Building Information Models in Open Web Services](#)
- [Building Interior Spaces Data Model for GIS](#)
- [Studying Urban View Corridors](#)
- [Belfast 3d Model Phase 1](#)